


Parish Councillors


Peter Badham	516779	Bishop's Cleeve Parish Council Parish Offices Church Road Bishop's Cleeve Cheltenham GL52 8LR Telephone 01242 674440 clerk@bishopscleevepc.org www.bishopscleevepc.org
Fran Beattie	672089	
Chris Benfield	07768 96524	
Paul Benfield	07900180490	
Mark Cooper	07751311157	
Lesley Drake	679904	
David Lewis	702573	
Ann Lightfoot	676682	
Pete Lightfoot (chair)	676682	
Tony Mackinnon	672534	
Geoff Matthews	676746	Office opening hours 9am to 3pm weekdays 10am to 3pm on Wednesday
John Peake	677315	Welcome to new Cleeve West Parish Councillor: Paul Benfield who was recently co-opted 
Kate Peake	677315	
Mary Reddicliffe	698193	
Andrew Reece	673710	
Peter Richmond	678271	
Alan Robinson	674601	
Alan Shakespeare	663956	
Robert Stayt	677961	
Philip Taylor (vice Chair)	677193	



Bishop's Cleeve Parish Council

Inside this issue:

Newsletter Spring 2014

The Adopted Actions	2	Facilities available to hire: <ul style="list-style-type: none"> Community Building & Parish Office meeting Room (£14 per hour) Sports field grass pitches from £40 per game Sports field Astro from £33 per hour For more information see our website or email deputy@bishopscleevepc.org
How they will be delivered	3	
Keeping Safe in Bishop's Cleeve	4	
Stranger Danger	5	Community Plan adopted 
Youth Provision	6	
Did You Know?	7	The Caterpillar has been transformed into a beautiful Butterfly and has now been adopted by the Parish Council See over the page for the adopted Actions and visit our website for the full story and the final Community Led Plan
Contacts	8	
New Councillor	8	

The Adopted Actions

- To improve the range of local shops
- To support household waste recycling at Wingmoor Farm
- To increase visibility of local policing
- To lobby for the provision of a NHS Dentist in the Village
- To lobby for the provision of a local swimming pool and bowling alley
- The provision of more medical facilities in the Village
- To oppose large scale future housing developments
- To support the British Legion Remembrance Services
- To provide more facilities in the Grangefield
- To install wild meadow and informal areas in play areas and public open spaces
- To install designated footpaths around playing fields
- To improve the current traffic management in the Village
- To reduce dog fouling nuisance

Did You Know?



- **SPORT RELIEF** is coming to the sports field, Cheltenham Road on Sunday March 23rd 2014,

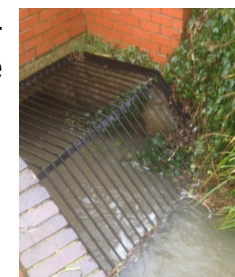
- The land known as “**The Shrubby**” Cheltenham Road is still owned by the housing developer
- It is now being maintained by local residents.

- £22000 is the amount The Council has provided in **grants** this year to support initiatives such as youth football, the Sports centre, Scouts and Youth theatre work

- The seat around the tree in School Road is called the **Browning seat**
- If you know when it was installed and by whom can you let us know



- The Parish Council spends a minimum of £14000 every year on the **Watercourses** in its playing fields and the sports field
- They are checked monthly and
- Checked daily at times of high risk
- Checked every four hours during Flood alerts



- The new **wall** around the Parish Garden was paid for by s106 monies negotiated by Tewkesbury Borough Council from the developers of Homelands



Youth Provision



During the Community Led Plan consultation, 82% of respondents did not wish to see youth provision within the Village centre. The Parish Council has taken this into account when deciding how to

continue to support the young people of the Village. Two nights are held at the sports field pavilion on Cheltenham Road

The Council also provide youth activities in residential areas around the Village using the Nottingham Road, Pecked Lane and Finlay Way play areas on 3 other evenings and during school holidays where funding is available. All are free to



take part in and all young people over the age of 11 are welcome. By installing youth shelters in all its play areas (£32000) the Parish Council has also given young people somewhere dry to meet.

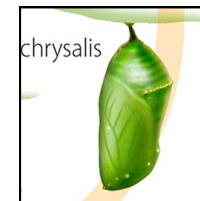
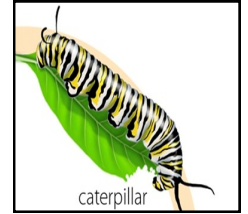
Since taking over youth provision in 2011, over 6,200 visits to our sessions have been made by young people from Bishops Cleeve and other Parishes. The Parish Council expect to have spent in excess of £140,000 on youth provision between 2011 and 2015

How they will be delivered

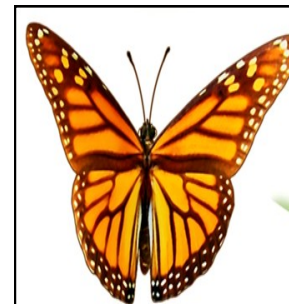
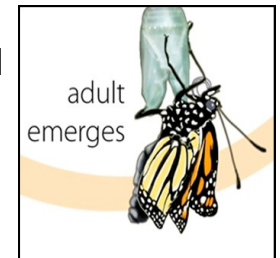
The Parish Council cannot deliver all of the Actions agreed in the Community Led Plan by itself. Sometimes it is because the Parish Council does not have the legal power to spend money in a specific



area, or does not own the land in question and sometimes the project would be too large for the Parish Council to fund or deliver.



The Parish Council have been talking to other organisations and local Authorities throughout the 2 year consultation period and have the agreement of these other agencies to work in partnership to deliver the Actions



Call in to the Parish Office or go to the Parish Council website, following the links to the Community Led Plan, and you will be able to find details of **How** the Actions will be delivered

Keep Safe in Gloucestershire

The **keep safe scheme** in Gloucestershire was set up in July 2010 to support people with learning disabilities in Cheltenham, Gloucester and the Forest of Dean. All adults are welcome to register as a member of the Keep Safe Scheme which identifies safe places where assistance can be sought when required. Shops and business that have registered as a safe place display logo in their windows and receive appropriate training for their staff in disability awareness, dementia awareness and communication skills. Badhams Chemist and Tesco's are registered in Bishops Cleeve and the Parish Council is in the process of completing the training. Look out for the orange stickers. Further details are available at www.keepsafeglos.org



Did you know that the Police website has a **Kids Aware** Section with web pages written especially for young people

www.gloucestershire.police.uk/kids_aware/3.html

Including Stranger Danger, Internet Safety, Play Safe, Bullying and Mobile Phone safety



An example of the Kids Aware section

A stranger is someone you don't know. Most strangers are nice, but some are nasty and want to hurt children.



Remember: you can't tell a good guy from a bad guy just by looking at them. If a stranger frightens you go home and tell your parents or carer right away.

If you can't go home, tell someone you can trust, like:
a police officer in uniform ,
your teacher
a grown up you know well